

# CORPUS CONGRESS CENTRE





## CONGRESS CENTRE

**A premier congress centre housed in a striking building. Rooms brimming with unexpected potential, varying in size and lighting, offering panoramic views and top-notch acoustics. Conveniently located at the heart of the Dutch Randstad region with a hotel next door, the CORPUS Congress Centre truly has it all. Guaranteeing your guest satisfaction, it is the quintessential venue for your events.**

Owing to the diversity and adaptability of its rooms, the CORPUS Congress Centre provides a plethora of opportunities for inspiring meetings in a unique setting. At the same time, these rooms are perfectly adaptable to any need. Features include a spacious lounge (450m<sup>2</sup>), a congress room that can be divided to form a smaller congress room, and four multi-purpose rooms suitable for breakout sessions. And then there is the penthouse on the 8th floor which has breathtaking views. On top of that, it's possible to rent the entire building.



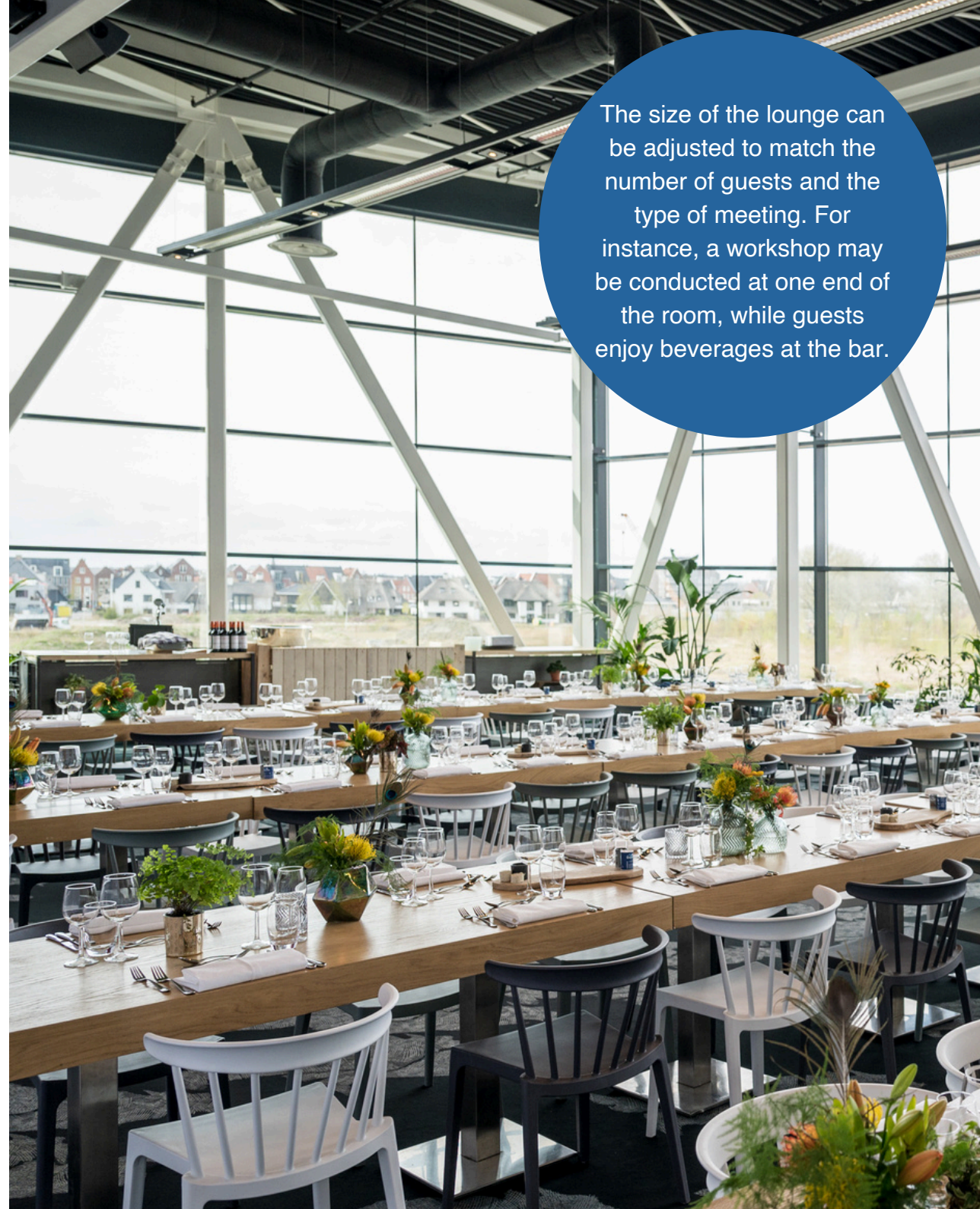
# LOUNGE

Situated next to the primary congress room is the lounge; the ultimate centrepiece that catches the eye as soon as one enters the CORPUS Congress Centre: a spacious 450m<sup>2</sup> area with a 7-metre ceiling. The glass panelling ensures abundant natural light, creating a great ambiance and a captivating view.

This central space is perfect for catering, networking, or breaks. The lounge is also ideal for setting up stands and branding, hosting exhibitions, and poster sessions. It can double as a reception or registration area, an exhibition space during meetings, or even as a party venue.

Furthermore, the lounge boasts a modern bar and a south-facing terrace.

The size of the lounge can be adjusted to match the number of guests and the type of meeting. For instance, a workshop may be conducted at one end of the room, while guests enjoy beverages at the bar.





## CONGRESS ROOMS

Congress room A can be swiftly resized to become Congress room B. This space is perfect for an intimate dinner or celebration, among other functions. In particular since this room can be expanded with four breakout rooms, which in turn can be interconnected in various configurations.

Located on the 2nd floor, the congress room is the showpiece of the CORPUS Congress Centre. This expansive 568m<sup>2</sup>, 7-metre-high industrial space is suitable for virtually any event: from plenary sessions for up to 540 attendees to grand dinners or lively celebrations. The room can be darkened or quickly filled with daylight. The possibilities are indeed plentiful!

A large 30m<sup>2</sup> stage is made up of individual components, offering multiple configurations. The stage, curtains, and walls can be illuminated in all LED colours. Superior acoustics and state-of-the-art AV equipment complete the room. And of course, we are on hand to source any additional equipment you might need.



# BREAKOUT ROOMS

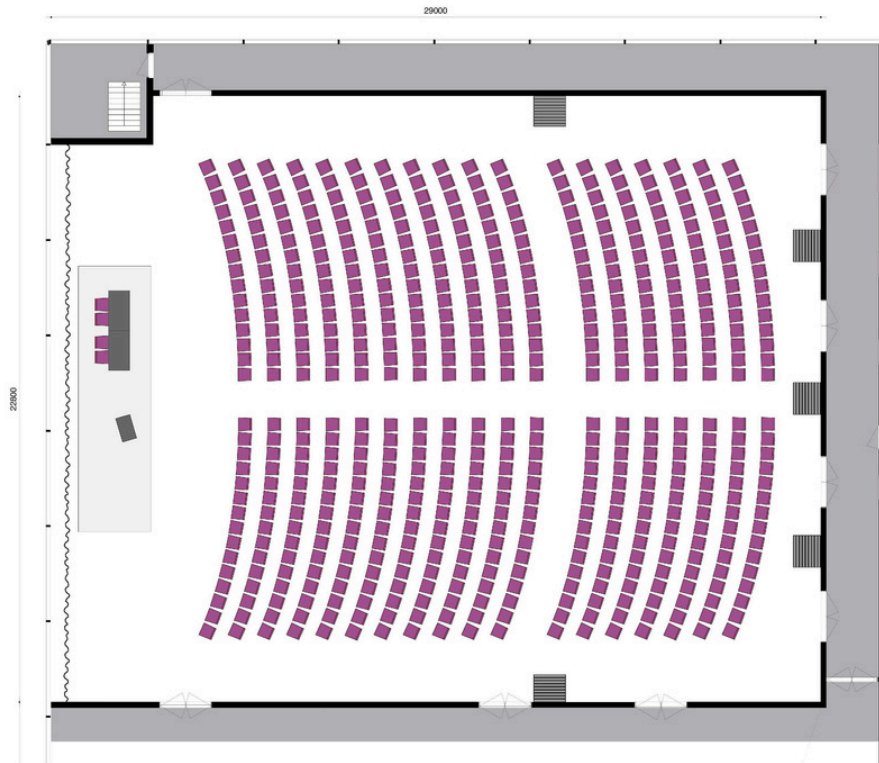
The CORPUS Congress Centre features four of these multi-purpose 58m<sup>2</sup> rooms. They are perfect for workshops, meetings, or sub-sessions. These breakout rooms neighbour Congress room B and can function both independently and in conjunction. Please refer to the factsheet in this brochure for various seating arrangements. Of course, standing meetings are also an option.

Breakout room 2/3 comes with a projector and screen when these rooms are interconnected. Meeting tables are provided, with the option to rent additional tables.



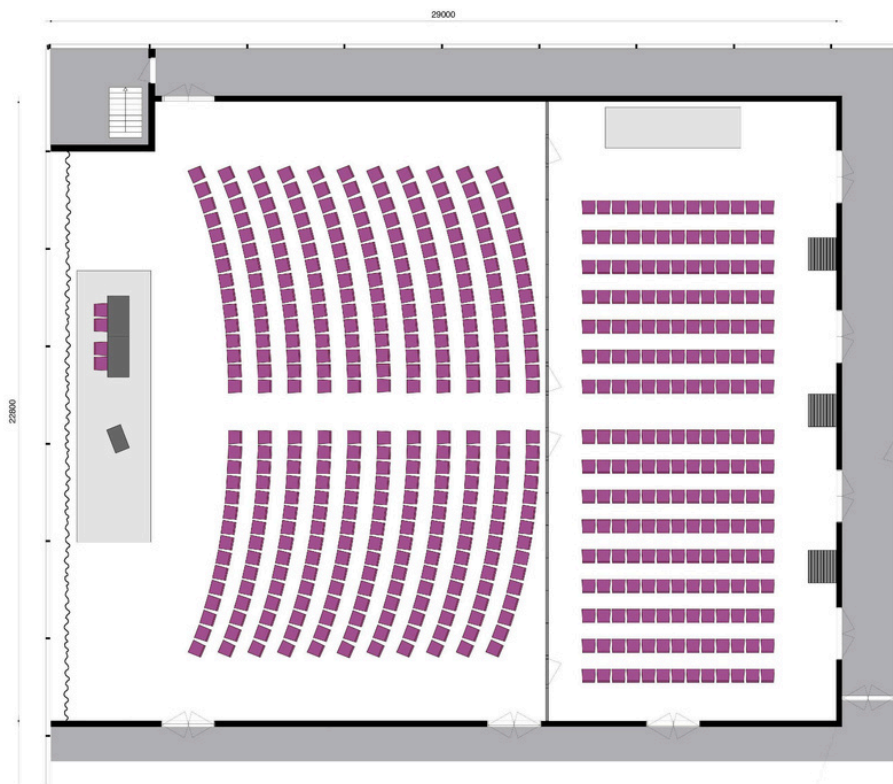
# EXAMPLE OF LAYOUT CONGRESS ROOM A

When all movable partitions are open, Congress room A becomes the largest space. This plenary hall has a total area of 568m<sup>2</sup> and can host up to 540 guests in a theatre-style arrangement.



# EXAMPLE OF LAYOUT CONGRESS ROOM B AND ADDITIONAL ROOM C

Congress room B spans 328m<sup>2</sup> and can seat up to 330 guests in a theatre-style setting. The four interconnected breakout rooms constitute the additional room C. Collectively, they cover 240m<sup>2</sup> and can seat up to 208 attendees in a theatre-style arrangement. Different capacities are applicable for U-shape, classroom, or cabaret-style seating.

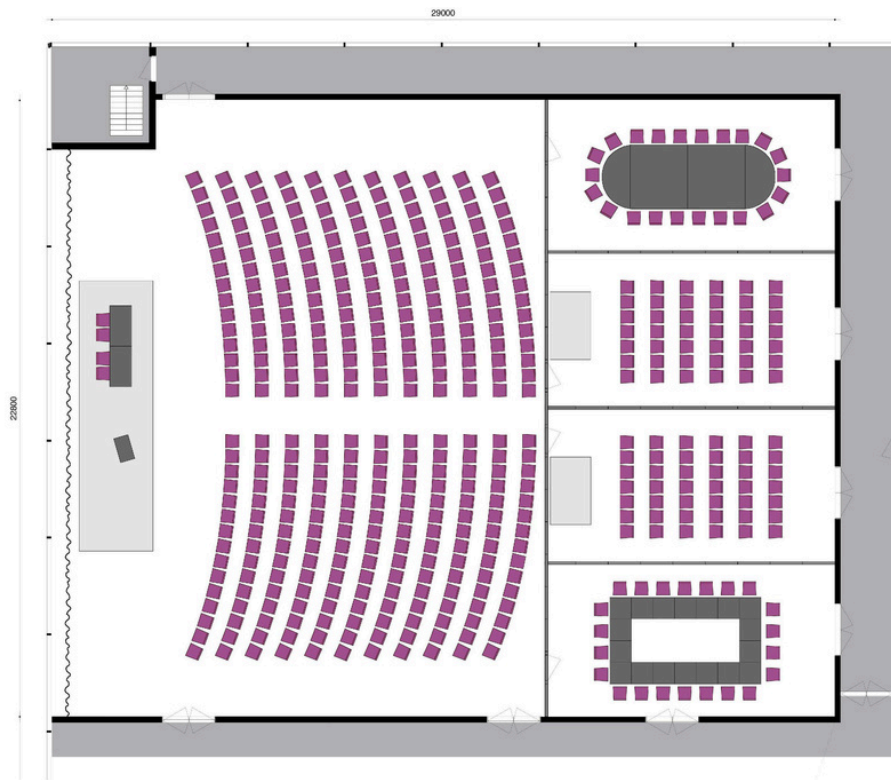




# EXAMPLE OF LAYOUT CONGRESS ROOM B WITH 4 BREAKOUT ROOMS

When all partitions are utilised, four supplementary rooms of 58m<sup>2</sup> each are available. The seating capacities are as follows: Theatre: 54, Square: 24, U-shape: 20.

Two connected rooms accommodate 104 guests in a theatre-style setup.



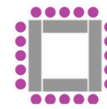
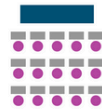
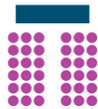
# THE OPTIONS ARE SURPRISING

The congress room (A or B) is large enough to facilitate alternative settings. For instance, it can be used to host workshops, dinners, or parties. The stage can be removed to create a centralised setting or to position seating on either side of a catwalk. Overhead banners can segment the rooms into more intimate spaces.



# ROOM CAPACITY

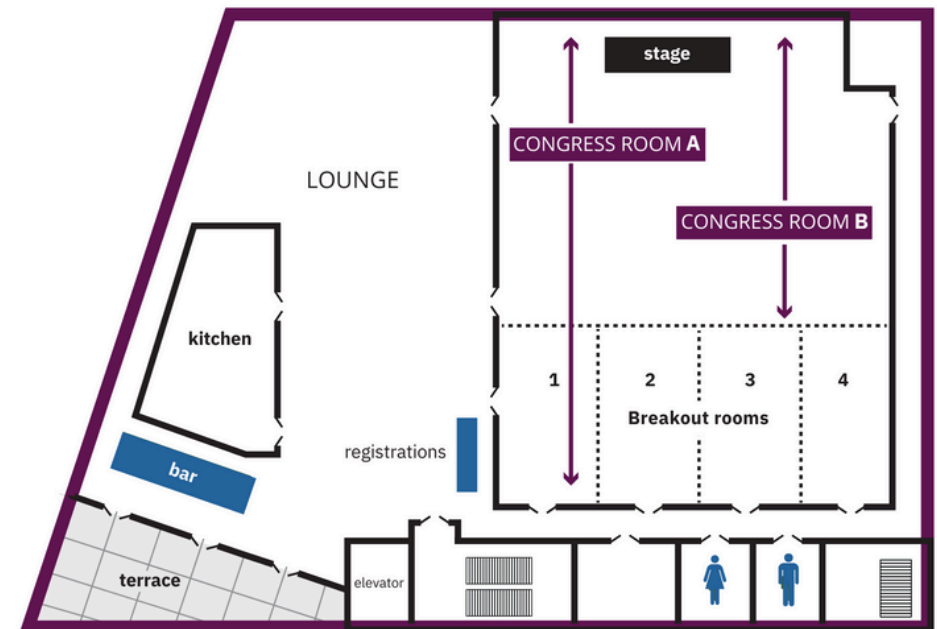
Room layout	M <sup>2</sup>	Dimensions	Theater	School	Cabaret	Carré	U-shape	Sitdown diner	Reception	Party / Buffet
Congress room A	568	25,5 x 22,3 x 7	540	154	200	92	72	300	450	350
Congress room B	328	14,7 x 22,3 x 7	330	74	120	72	56	180	250	200
Lounge	450	27 x 16,6 x 7	N/A	N/A	N/A	N/A	N/A	200	400	300
Breakout room	58	10,4 x 5,6 x 7	54	12	24	24	20	N/A	N/A	N/A
Double breakout room	116	10,4 x 11,2 x 7	104	28	40	40	36	N/A	N/A	N/A
Three interconnected breakout rooms	174	10,4 x 16,7 x 7	143	42	60	N/A	N/A	N/A	N/A	N/A
Four interconnected breakout rooms	232	10,4 x 22,3 x 7	208	56	80	N/A	N/A	N/A	N/A	N/A
Penthouse	87	9,2 x 9,4 x 3,25	60	14	28	24	20	60	60	60



We do not work with fixed room hire rates; the quoted price always starts from a base rate. This is because the final rate is contingent on the comprehensive package (including catering and technical support), the season, the day of the week, and the number of attendees. Hence, we always provide a tailored quotation.

## Facilities

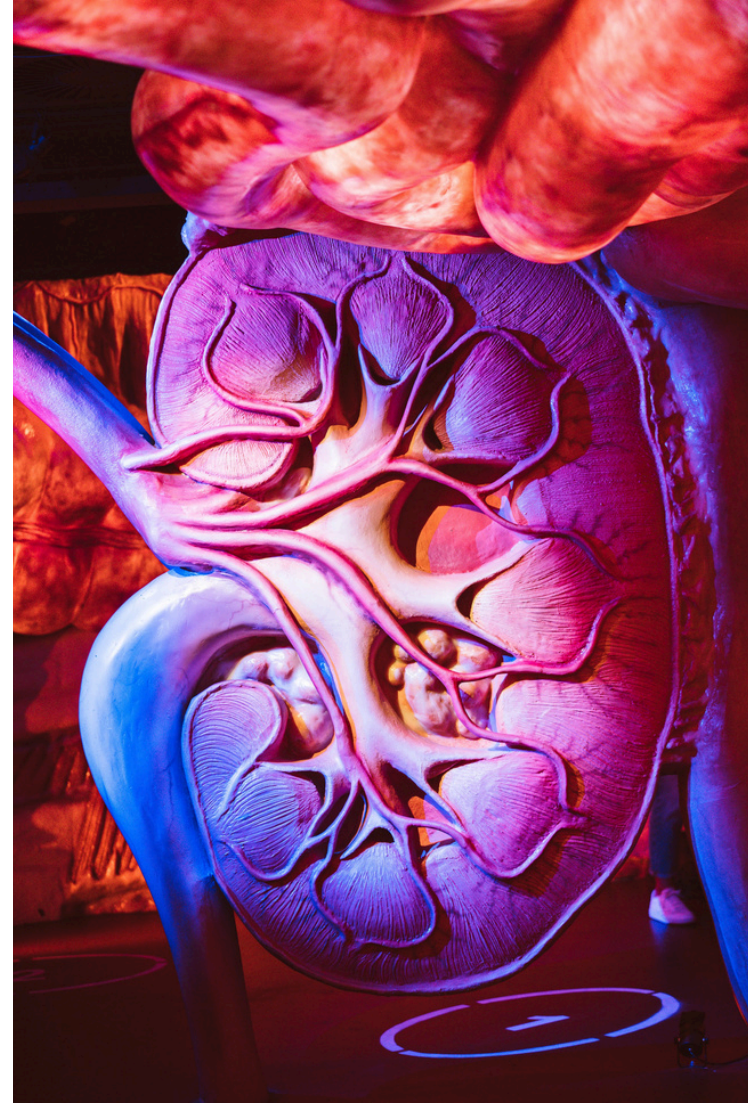
Standard amenities in the conference room include a modular stage (10x3), AV equipment according to the latest standards, a widescreen laptop and pointer, basic lighting and sound (with 1 wireless microphone), Wi-Fi, a mobile (reception) desk, and a lectern.



# PENTHOUSE

A hidden gem at the top floor of the building, offering a magnificent panoramic view. Located on the 8th floor, above the brain platform, this luminous 90m<sup>2</sup> space can host attendees in theatre or dinner configurations. Furthermore, it doubles as a splendid venue for drinks, training sessions, brainstorming, workshops, or even breakfasts, all while enjoying the panoramic coastal views.







## CATERING

The CORPUS Congress Centre offers standard packages for your convenience. Fancy something different? We are flexible and can tailor to your needs.

We work with a dedicated event caterer who knows their way around CORPUS. They are eager to brainstorm ideas and ensure your event is a roaring success. However, if you prefer to bring your own caterer, they are more than welcome. Please discuss this with our event managers.



# JOURNEY THROUGH THE HUMAN BODY

The sight of the colossal human figure is bound to pique curiosity. Why not integrate the 'journey through the human body' into your event schedule? During this unique 'journey', your guests will be enthralled by the marvels of human anatomy; an experience they will not be forgetting any time soon.

If you really want to make your event unforgettable, rent the entire building. This means that not only all conference rooms are at your disposal, but also the rooms in the 'journey through the human body' and 6 interactive rooms can serve as sub rooms.





## CORPUS SHOP

Enhance your visit to CORPUS with a stop at our shop, situated in the entrance hall on the ground floor. The shop boasts a diverse range of products, from books to exquisite candles and educational games for all ages. Even if you skip the journey through the human body, the shop is certainly worth a visit.







# SUSTAINABILITY

CORPUS is a smart building. It conserves energy through solar panels and motion sensors, utilises a thermal energy storage system for climate regulation, and employs LED lighting. Various systems intercommunicate via a building management system to conserve even more energy.

Our environmental commitment is not just limited to energy conservation; it is integral to the CORPUS ethos. One tangible outcome of this commitment is our Green Key certification. And our commitment is reflected in our pursuit to minimise waste production, and our reputable range of organic and fair-trade products.

On our rooftop resides a colony of bees. They produce delicious organic honey which, when in season, is for sale in the CORPUS Gift Shop.



# AN UNUSUAL BUILDING

The CORPUS Congress Centre stands as a one-of-a-kind venue, nestled in the heart of the Leiden Bio Science Park and conveniently located alongside the A44 motorway. It is a location that your guests will remember for a long time to come.

Adjacent to CORPUS is the Hilton Garden Inn Hotel \*\*\*\*, boasting 173 rooms. Together, these two establishments form a comprehensive congress complex, ideal for both single-day and multi-day events, regardless of scale.



We bid you a warm welcome  
to CORPUS

We warmly invite you to experience CORPUS for yourself. For more detailed information, we encourage you to visit our website. If you have specific queries, are considering hosting your event at the CORPUS Congress Centre, or would like a guided tour, please do not hesitate to reach out to the dedicated team at the CORPUS Congress Centre.

[info@corpuscongresscentre.nl](mailto:info@corpuscongresscentre.nl)  
071 75 10 203



# CORPUS Congress Centre

Willem Einthovenstraat 1

2342 BH Oegstgeest

071 - 75 10 203

**THE TEAM AT CORPUS CONGRESS  
CENTRE IS KEEN TO MAKE YOUR EVENT  
AN UNFORGETTABLE SUCCESS!**



**Oegstgeest**

A44 / EXIT 8  
Leiden

